

SANJAY SALES CORPORATION



— SINCE 1995 —

WE ARE OPEN
MONDAY TO SATURDAY
10:00 AM - 07:00 PM

ADDRESS

phone +91-8527600622 +91-80764 90180
email info@ingredientsforall.com
site www.ingredientsforall.com

10, PUNJAB OIL EXPELLER COMPOUND
MEERUT ROAD INDUSTRIAL AREA
GHAZIABAD-201001, UTTAR PRADESH

ABOUT THE COMPANY

MAKE YOUR BUSINESS WITH PROFFESIONAL TEAM

An adequately experienced, qualified and skilled team of professionals is the major strength of our organization, which consistently leads us towards the new heights of success. Our professionals are industrious people, who help us in conducting a systematic and effective business operation of all our activities. Our entire team works together with dedication to meet

ABOUT US

Sanjay Sales Corporation is engaged in trading an excellent quality range of Cocoa Powder, Starch Powder, Milk Powder, Maltodextrin Powder, etc. We are a Sole Proprietorship firm and we source products from the reliable manufacturers which can be availed from us at reasonable prices.

Our other concerns are:- Sanjay Sales Corporation, B.R Dairy Chem Pvt Ltd, Shyam Milk Food Pvt Ltd, Gaurang Enterprises, Amul Enterprises.

WHY CHOOSE US

We are highly appreciated by clients for offering excellent quality products. With our team's support, we have been able to cater varied needs of patrons in an efficient manner.





SINCE 1995

MILESTONE

1940

Started with grains trading.

1945

**Grains trading.
Added gree trading.**

1986

**Grains trading.
Gree trading.
Added starch and glocose trading.**

1990

**Grains trading.
Gree trading.
Starch and glocose trading.
Added SMP trading.**

1998

**Grains trading.
Gree trading.
Starch and glocose trading.
SMP trading.
Added Cocoa Powder.**

2004

**Grains trading.
Gree trading.
Starch and glocose trading.
SMP trading.
Cocoa powder.
Added whey powder, malto and other
food raw materials.**

www.ingredientsforall.com

+ 91- 120 4565634



INFO@INGREDIENTSFORALL.COM

OUR PRESENCE



HEAD OFFICE



BRANCHES



IMPORTS

www.ingredientsforall.com

+ 91- 120 4565634



INFO@INGREDIENTSFORALL.COM



Whole Milk Powder

Whole milk powder is often used to enhance the dairy flavor of foods. Foaming dry whole milk helps diffuse protein to an air/water interface reducing surface tension and partially unfolding the protein.



Maltodextrin Powder

Maltodextrin powder is used as a stabilizer, sweetener and thickener in many packaged foods. It is found in condiments like salad dressings, spice mixes, soups and sauces, baked goods, yogurt, nutrition bars, sugar-free sweeteners.



Milk Protein Concentrate

This high-protein low-lactose ratio makes MPC an excellent ingredient for protein-fortified beverages and foods and low-carbohydrate foods. MPC can make products more heat stable, and it can provide solubility and dispersibility when used.



Skimmed Milk Powder

Skimmed milk powder is mostly used in products based on reconstituted milk (yogurt, dairy dessert, ice creams), in chocolates, in confectionery, in baby food, in animal feeding.



Sodium Bi Carbonate

Sodium Bicarbonate Used As Leavening Agent To give volume to bakery formulations like cakes, crackers and wafers, a baking powder is mandatory. Sodium bicarbonate reduces stomach acid.



Sodium Meta-bite Sulphite

Sodium Metabite Sulphite are substances that are naturally found in some foods. They are used as an additive to maintain food colour, shelf-life and prevent the growth of fungi or bacteria.





Baking Soda

Baking soda is a leavening agent used in baked goods like cakes, muffins, and cookies. Formally known as sodium bicarbonate, it's a white crystalline powder that is naturally alkaline..



Butter

It is generally used as a spread on plain or toasted bread products and a condiment on cooked vegetables, as well as in cooking, such as baking, sauce making, and pan frying. Butter consists of butterfat milk proteins and water.



Caramel Colour

Caramel Color is the world's most widely used food colorant. It is used largely to impart color in numerous foods and beverages including colas, soy sauce, seasonings, breads, pet foods, cereals, etc.



Chocolate Choco Chips

Chocolate chips or chocolate morsels are small chunks of sweetened chocolate, used as an ingredient in a number of desserts in trail mix and less commonly in some breakfast foods such as pancakes.



Citric Acid

Citric acid is predominantly used as a flavoring and preserving agent especially in soft drinks and candies. It's also used to stabilize or preserve medicines and as a disinfectant against viruses and bacteria.



Cocoa Powder

Cocoa powder is used in baking to add color and to give foods a deep chocolate flavor. Which contain sugar and powdered milk, cocoa powder is generally unsweetened and contains no ingredients outside of pure cocoa.





Tutti Frutti

Tutti Frutti can also refer to fruits soaked in brandy or other spirits, or even to fruit fermented in a liquid containing sugar and yeast. Tutti frutti is also used in cold desserts as topping for ice cream and sundaes.



Liquid Glucose

Liquid glucose is used in conjunction with sugar for manufacturing flavoured candies and chocolates. It is used in the preparation of glucose biscuits. It helps keep food products soft and fresh and acts as a preservative.



Liquid Malt Extract

Concentrated by using heat or a vacuum procedure to evaporate water from the mixture. The concentrated wort is called malt extract. Liquid malt extract (LME) is a thick syrup and is used for a variety of purposes, such as baking and brewing.



Liquid Soy Lecithin

A natural phospholipid from soybean, Liquid Soy Lecithin is an emulsifying agent that helps fat and water stay together. It is often added to foods, such as chocolate, cheese, margarine, and salad dressing.



Maize Starch

Maize starch is a common food ingredient, used in thickening sauces or soups, and in making syrup and other sugars. It is versatile, easily modified, and finds many uses in industry as adhesives.



Malt Extract Powder

Barley malt powder is a natural sweetener and flavoring. It is mainly used as an ingredient to make malt loafs, bagels and beer. It is also used to make malted milk, malt candies, malt vinegar, icings and fillings, biscuits and other baked goods.





Coconut Flakes

The healthy fat and dietary fiber content of coconut flakes can help keep hunger at bay and can give you long-lasting energy as the fat digests slowly. It also helps preserving healthy tissues and fighting diseases.



Coconut Powder

Coconut powder is made by drying coconut cream. It is an active cooking ingredient that is used in most of the Southeast Asian dishes. It can be easily used as a cooking ingredient in healthy soups and dishes.



Condensed Milk

Condensed milk is added to coffee both hot and cold to add flavor. You can make ice cream, cakes or even add it to certain sweet-savory stews and soups to make them more creamy.



Dairy Whitener

Dairy whiteners have a good whitening ability and are frequently used for tea or coffee making without having to add further sugar. Dairy whitener is made by removing the liquid from the cow milk.



Dextrose Anhydrous

Dextrose Anhydrous is often used in baking products as a sweetener, and can be commonly found in items such as processed foods and corn syrup. Dextrose also has medical purposes.



Dextrose Monohydrate

Dextrose Monohydrate serves as a sweetener, energy source, bulking agent, and cryoprotectant in an extensive variety of food applications including cakes, pastries, soups, sauces, ice cream, seasonings as well as others.





Sorbitol

Sorbitol and sorbitol syrup are obtained from dextrose and glucose syrups. Sorbitol is used for its sweetening power in a wide variety of food products. It is a preferred ingredient in sugar-free confectionery and energy-reduced products.



Soya Lecithin

Soya Lecithin is a food additive that comes from several sources — one of them being soy. It's generally used as an emulsifier, or lubricant, when added to food, but also has uses as an antioxidant and flavor protector.



Whey Protein Isolate 90%

Whey Isolate™90 is a protein source, contributing to the growth in muscle mass. This supplement can also be used effectively pre-workout to help contribute to the maintenance of muscle mass.



Whey Protein Concentrate 80%

Whey Protein Concentrates are concentrates of whey with a whey protein content of 15% to 80%. They are used as ingredients for the manufacturing of reconstituted milk products, diet foods or sports drinks, infant foods, and more.



Whey Powder

Whey protein is the protein contained in whey, the watery portion of milk that separates from the curds when making cheese. Whey protein is commonly used for improving athletic performance and increasing strength.



Jeera

Jeera is fantastic for digestion, one of the most well-known jeera water uses. The powerful anti-gas chemicals within protect the body against irritable bowel disease and solves flatulence, belching and burps in a flash.





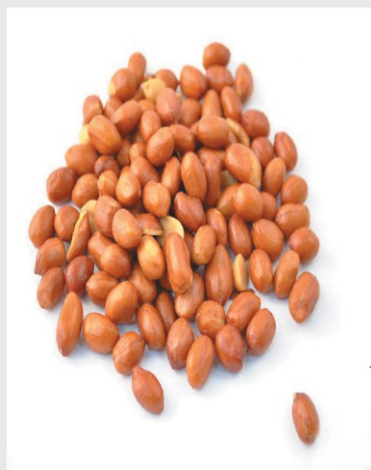
Roasted Jeera

Jeera has many evidence-based health benefits. Using jeera as a spice increases antioxidant intake, promotes digestion, provides iron, may improve blood sugar control and may reduce food-borne illnesses.



Peanuts

It is used in a variety of foods, such as desserts, cakes, confectionery, snacks, and sauces. Peanuts are rich in protein, fat, and various healthy nutrients. Peanuts are most often consumed roasted or as peanut butter.

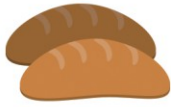


Roasted Peanuts

Roasted peanuts, as the name implies, are cooked in an oven by forced hot air, “dry-roasted” peanuts for cooking and baking—they tend to be seasoned with spices and flavorings that don’t always go with the other flavors in a recipe.



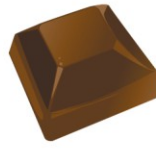
APPLICATIONS



Bread & Rusk Industry



Biscuit Industry



Chocolate Industry



Dairy Industry



Health & Nutritious Food Industry



Cake Premix



Mayonaise/ Souces



Noodle Industry



Non Dairy Cream Industry



Ice Cream Industry



Beverages Industry



Cereals Industry



Confectionary Industry



Sweets & Namkeen Industry



Spices & Seasoning



Aqua & Poultry Feed



Soup Mixes



Wafers Industry



Flour Mills



Distillery Industry



Pharmaceutical Industry





— SINCE 1995 —

SANJAY SALES CORPORATION

phone +91-8527600622, +91 8076490180, +91-9810777325
+91-9310019188, +91-9560200622

web www.ingredientsforall.com, email info@ingredientsforall.com

Plot No. 10, Punjab Oil Expeller Compound, Meerut Road Industrial Area,
Ghaziabad-201001, Uttar Pradesh, India

OUR BRANCHES:

DELHI, KOLKATA, KOTA (RAJASTHAN), KAS GANJ (UP), HARIDWAR (UK), VAISHALI (BIHAR)